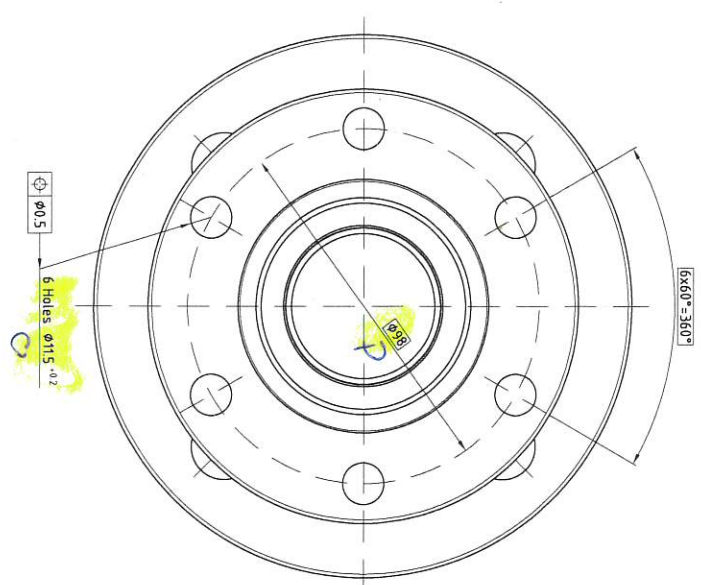
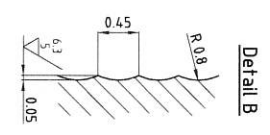
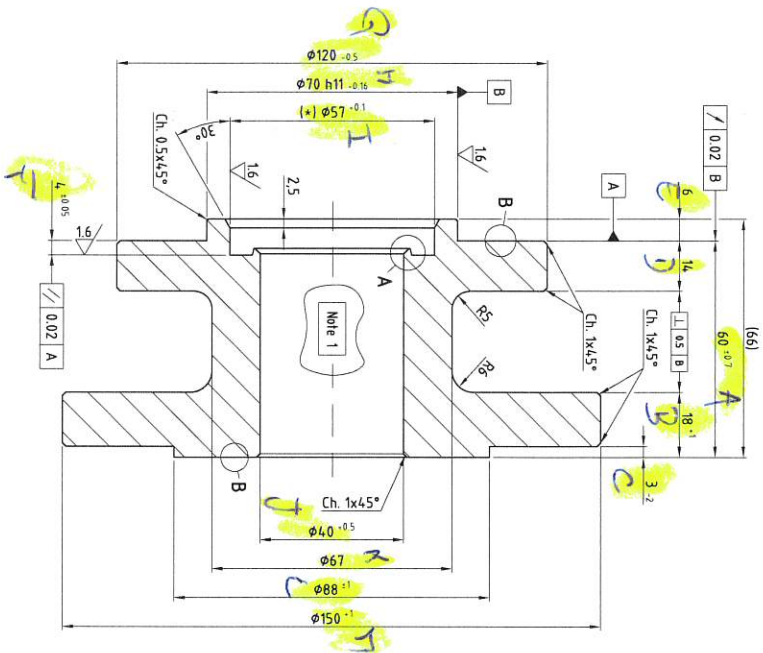
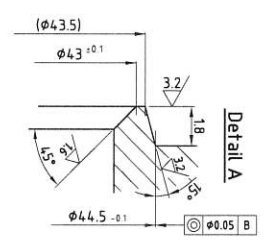
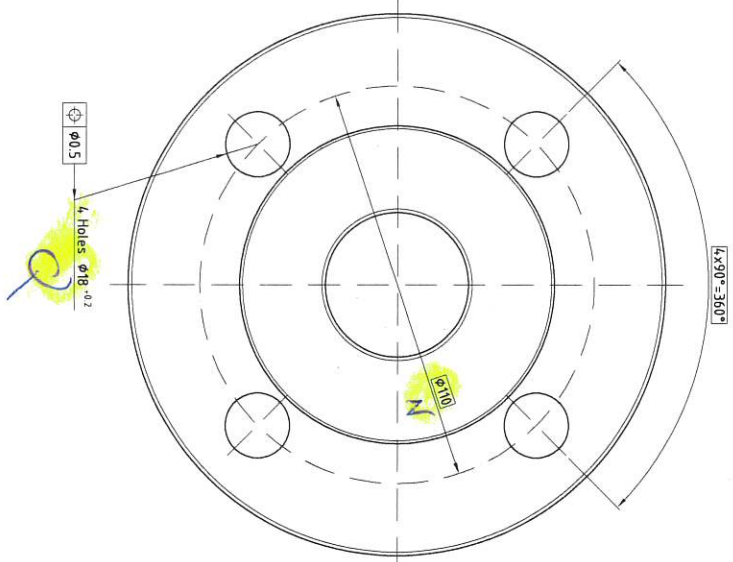


DIN 7168 Part 2			DIN 7168 Part 2					DIN 7168 Part 1								
General tolerances of position			General tolerances of shape					General tolerances in length & angular measures								
precision degree	symbol	tolerance	nominal size	tolerance	nominal size	tolerance	precision degree	symbol	tolerance	nominal size	tolerance	precision degree	symbol	tolerance	nominal size	tolerance
1		±0.1	0.5	±0.05	1	±0.05	1		±0.1	0.5	±0.05	1		±0.1	0.5	±0.05
2		±0.05	1	±0.03	10	±0.03	2		±0.05	1	±0.03	2		±0.05	1	±0.03
3		±0.03	10	±0.02	100	±0.02	3		±0.03	10	±0.02	3		±0.03	10	±0.02
4		±0.02	100	±0.015	1000	±0.015	4		±0.02	100	±0.015	4		±0.02	100	±0.015
5		±0.015	1000	±0.01	10000	±0.01	5		±0.015	1000	±0.01	5		±0.015	1000	±0.01



Rev.	Modification	Date	Drawn	Chk.	Appr.	Scale	Surface	Material	Part Name
0	First Issue	07/23	LL	JS	JR	1:1	Surface without tolerances	Material	Part Name

JC
 VALVES
 SC Engineering & Machines S.A.U.
 Drawing n°: 0540B040L
 BODY CONNECTOR
 FIG.540B DN-40 PN-40

Note 1: Zone for heat numbers and type of material
 Sharp edges to be removed
 (*): Tolerance: $\varnothing 0.05$ B
 $6.3 / 3.2 / 1.6 / 0.8$