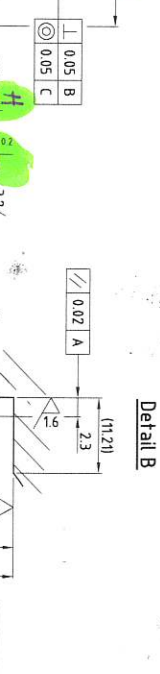
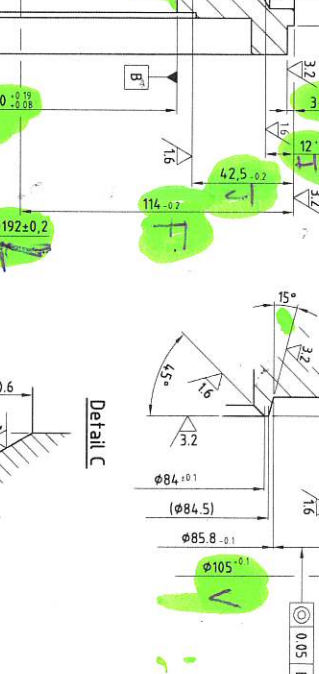
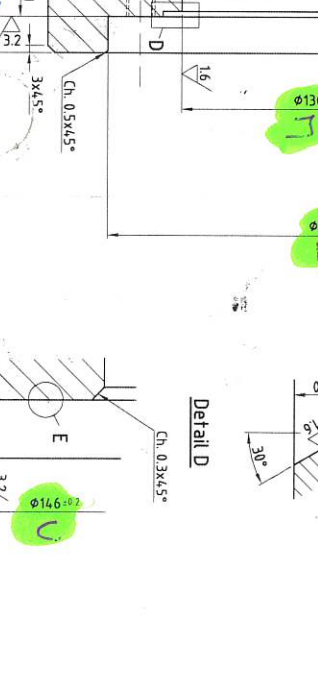
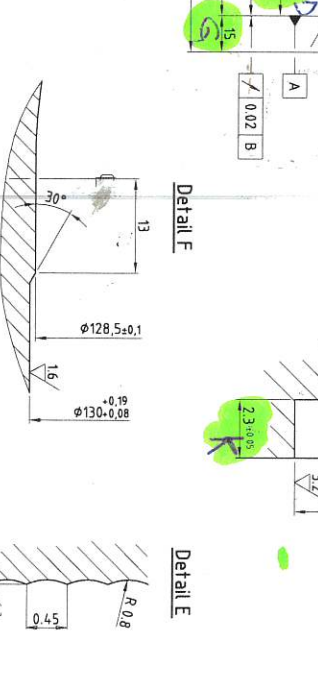
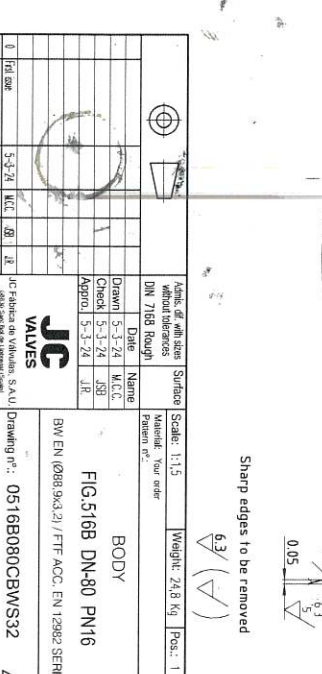
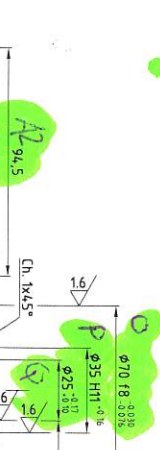
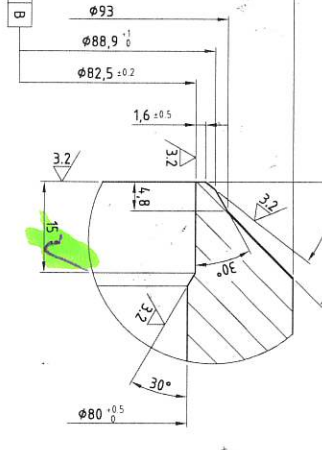
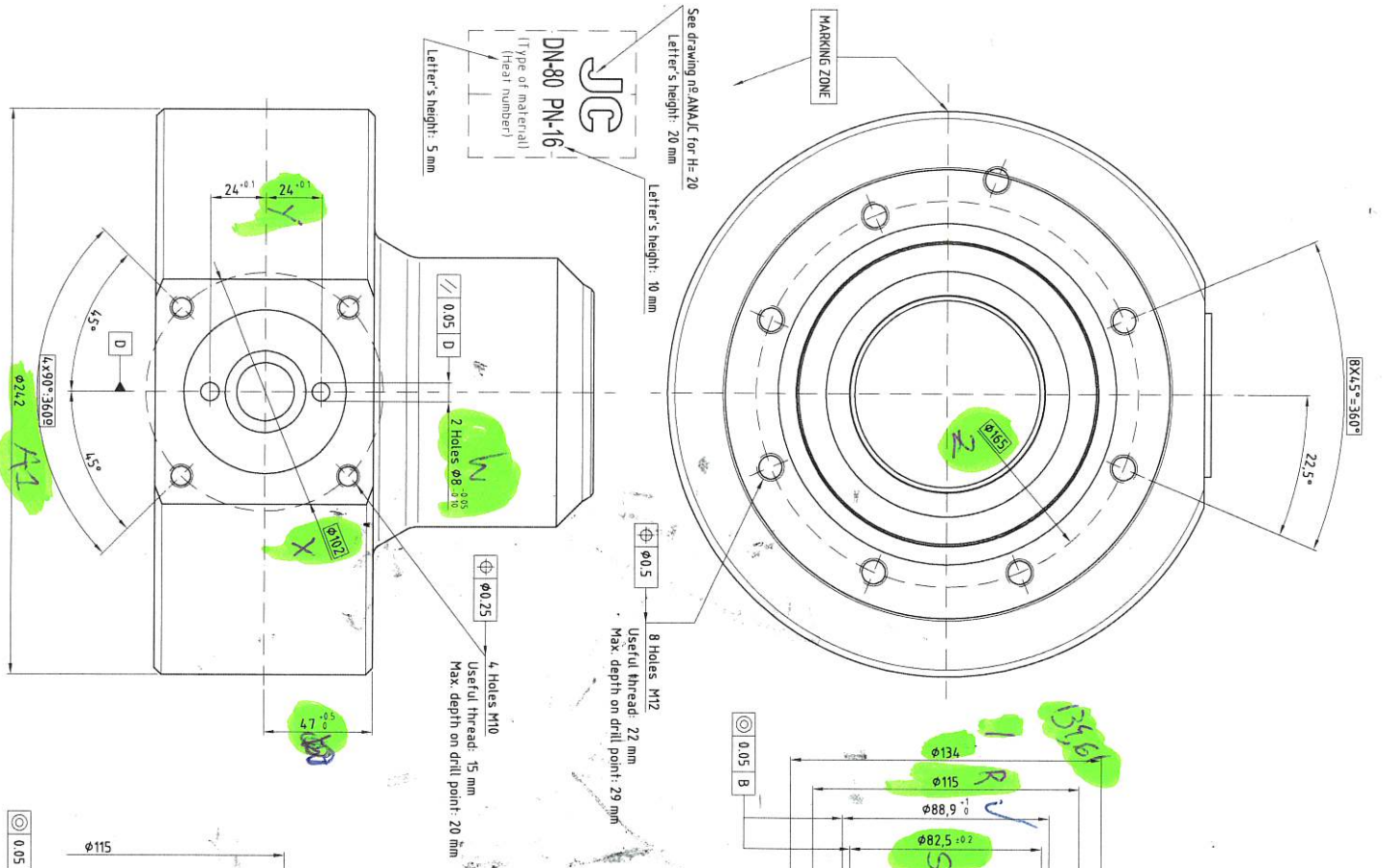


DN 7168 Part 2 General tolerances of position		
precision degree	symmetry	concentricity
1	1	1
2	2	2

DN 7168 Part 2 General tolerances of shape					
precision degree	alignment	Nominal measures			
		0.05	0.1	0.2	0.5
1	1	0.02	0.03	0.04	0.05
2	2	0.03	0.04	0.05	0.07

DN 7168 Part 1 General tolerances in length & angular measures					
precision degree	unit	Nominal measures			
		0.5	1	10	100
1	mm	0.05	0.07	0.1	0.15
2	mm	0.07	0.1	0.15	0.2
3	mm	0.1	0.15	0.2	0.3
4	mm	0.15	0.2	0.3	0.5
5	mm	0.2	0.3	0.5	0.7
6	mm	0.3	0.5	0.7	1
7	mm	0.5	0.7	1	1.5
8	mm	0.7	1	1.5	2
9	mm	1	1.5	2	3
10	mm	1.5	2	3	5
11	mm	2	3	5	7
12	mm	3	5	7	10
13	mm	5	7	10	15
14	mm	7	10	15	20
15	mm	10	15	20	30
16	mm	15	20	30	50
17	mm	20	30	50	70
18	mm	30	50	70	100
19	mm	50	70	100	150
20	mm	70	100	150	200
21	mm	100	150	200	300
22	mm	150	200	300	500
23	mm	200	300	500	700
24	mm	300	500	700	1000
25	mm	500	700	1000	1500
26	mm	700	1000	1500	2000
27	mm	1000	1500	2000	3000
28	mm	1500	2000	3000	5000
29	mm	2000	3000	5000	7000
30	mm	3000	5000	7000	10000
31	mm	5000	7000	10000	15000
32	mm	7000	10000	15000	20000
33	mm	10000	15000	20000	30000
34	mm	15000	20000	30000	50000
35	mm	20000	30000	50000	70000
36	mm	30000	50000	70000	100000
37	mm	50000	70000	100000	150000
38	mm	70000	100000	150000	200000
39	mm	100000	150000	200000	300000
40	mm	150000	200000	300000	500000
41	mm	200000	300000	500000	700000
42	mm	300000	500000	700000	1000000
43	mm	500000	700000	1000000	1500000
44	mm	700000	1000000	1500000	2000000
45	mm	1000000	1500000	2000000	3000000
46	mm	1500000	2000000	3000000	5000000
47	mm	2000000	3000000	5000000	7000000
48	mm	3000000	5000000	7000000	10000000
49	mm	5000000	7000000	10000000	15000000
50	mm	7000000	10000000	15000000	20000000
51	mm	10000000	15000000	20000000	30000000
52	mm	15000000	20000000	30000000	50000000
53	mm	20000000	30000000	50000000	70000000
54	mm	30000000	50000000	70000000	100000000
55	mm	50000000	70000000	100000000	150000000
56	mm	70000000	100000000	150000000	200000000
57	mm	100000000	150000000	200000000	300000000
58	mm	150000000	200000000	300000000	500000000
59	mm	200000000	300000000	500000000	700000000
60	mm	300000000	500000000	700000000	1000000000
61	mm	500000000	700000000	1000000000	1500000000
62	mm	700000000	1000000000	1500000000	2000000000
63	mm	1000000000	1500000000	2000000000	3000000000
64	mm	1500000000	2000000000	3000000000	5000000000
65	mm	2000000000	3000000000	5000000000	7000000000
66	mm	3000000000	5000000000	7000000000	10000000000
67	mm	5000000000	7000000000	10000000000	15000000000
68	mm	7000000000	10000000000	15000000000	20000000000
69	mm	10000000000	15000000000	20000000000	30000000000
70	mm	15000000000	20000000000	30000000000	50000000000
71	mm	20000000000	30000000000	50000000000	70000000000
72	mm	30000000000	50000000000	70000000000	100000000000
73	mm	50000000000	70000000000	100000000000	150000000000
74	mm	70000000000	100000000000	150000000000	200000000000
75	mm	100000000000	150000000000	200000000000	300000000000
76	mm	150000000000	200000000000	300000000000	500000000000
77	mm	200000000000	300000000000	500000000000	700000000000
78	mm	300000000000	500000000000	700000000000	1000000000000
79	mm	500000000000	700000000000	1000000000000	1500000000000
80	mm	700000000000	1000000000000	1500000000000	2000000000000
81	mm	1000000000000	1500000000000	2000000000000	3000000000000
82	mm	1500000000000	2000000000000	3000000000000	5000000000000
83	mm	2000000000000	3000000000000	5000000000000	7000000000000
84	mm	3000000000000	5000000000000	7000000000000	10000000000000
85	mm	5000000000000	7000000000000	10000000000000	15000000000000
86	mm	7000000000000	10000000000000	15000000000000	20000000000000
87	mm	10000000000000	15000000000000	20000000000000	30000000000000
88	mm	15000000000000	20000000000000	30000000000000	50000000000000
89	mm	20000000000000	30000000000000	50000000000000	70000000000000
90	mm	30000000000000	50000000000000	70000000000000	100000000000000
91	mm	50000000000000	70000000000000	100000000000000	150000000000000
92	mm	70000000000000	100000000000000	150000000000000	200000000000000
93	mm	100000000000000	150000000000000	200000000000000	300000000000000
94	mm	150000000000000	200000000000000	300000000000000	500000000000000
95	mm	200000000000000	300000000000000	500000000000000	700000000000000
96	mm	300000000000000	500000000000000	700000000000000	1000000000000000
97	mm	500000000000000	700000000000000	1000000000000000	1500000000000000
98	mm	700000000000000	1000000000000000	1500000000000000	2000000000000000
99	mm	1000000000000000	1500000000000000	2000000000000000	3000000000000000
100	mm	1500000000000000	2000000000000000	3000000000000000	5000000000000000



Revision		Date		Appr.		Signature	
Rev.	Modifications	Drawn	Checked	Approved	Signature	Date	Signature
1							
2							

Author	Designer	Checker	Approver

Material	Scale	Weight	Pos.
	1:1.5	24.6 kg	1

Surface	Finish

Material	Scale	Weight	Pos.
	1:1.5	24.6 kg	1

Material	Scale	Weight	Pos.
	1:1.5	24.6 kg	1

JD Fabrica de Valvulas, S.A.U.
 Drawing n°: 0516B080CBWS32
 BODY
 FIG.516B DN-80 PN16
 BW EN (08B 9X3.2) / FT/ AOC. EN 12992 SERIE 61

Sharp edges to be removed
 6.3 (V)

See drawing ANA1C for H=20
 Letter's height: 20 mm
 Letter's height: 10 mm
 Letter's height: 5 mm
 Letter's height: 20 mm
 Letter's height: 10 mm
 Letter's height: 5 mm

8 Holes M12
 Useful thread: 22 mm
 Max. depth on drill point: 29 mm
 4 Holes M10
 Useful thread: 15 mm
 Max. depth on drill point: 20 mm

8 Holes M12
 Useful thread: 22 mm
 Max. depth on drill point: 29 mm
 4 Holes M10
 Useful thread: 15 mm
 Max. depth on drill point: 20 mm