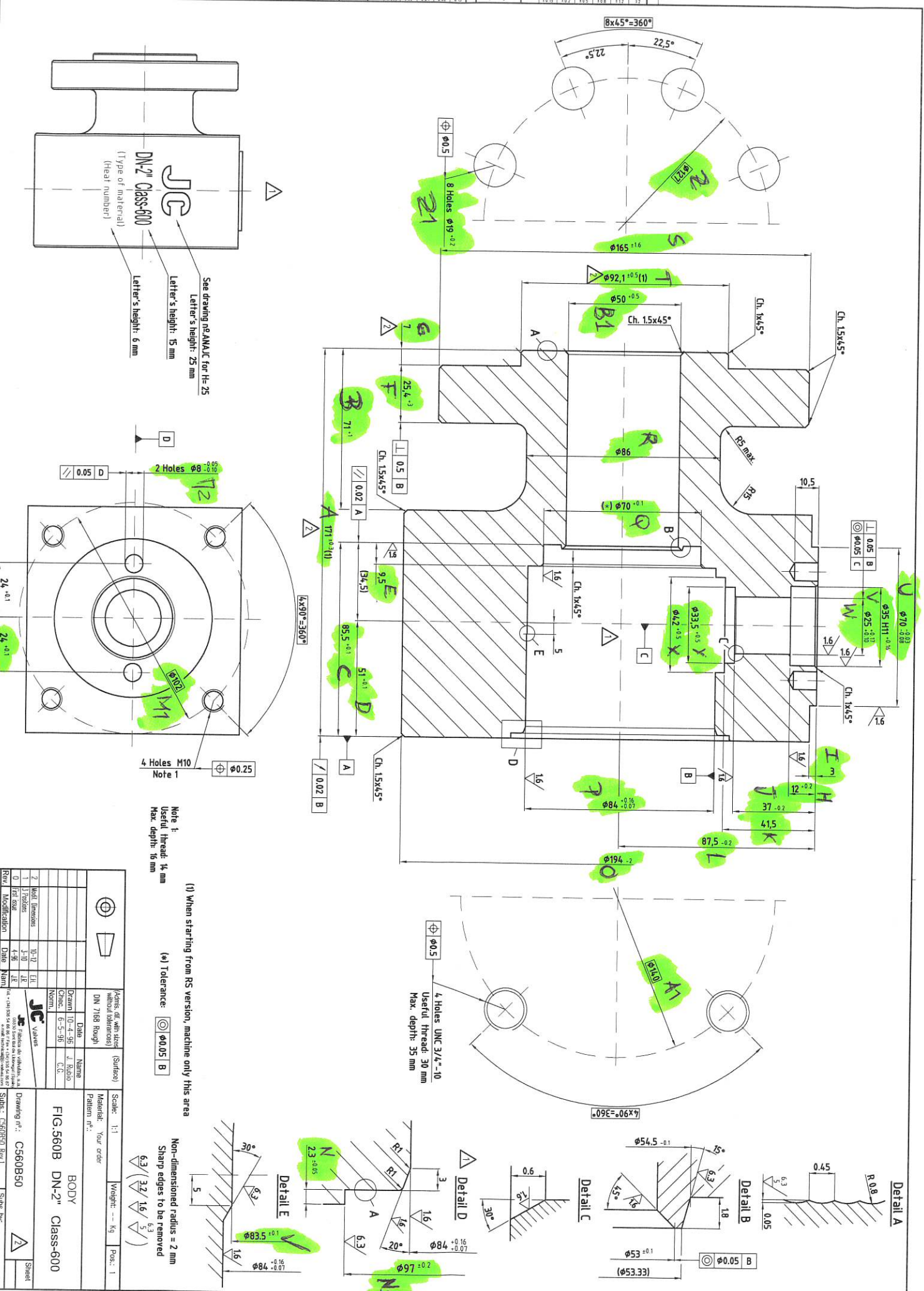


DIN 7168 Part 2		
General tolerances of position		
precision degree	Symmetry	1
1	concentricity	0.5
	parallelism	0.5

DIN 7168 Part 2			General tolerances of shape			
			Nominal measures			
precision degree	Form	Alignment	Form	Alignment	Form	Alignment
1	0.1	0.1	0.1	0.1	0.1	0.1
2	0.05	0.05	0.05	0.05	0.05	0.05
3	0.02	0.02	0.02	0.02	0.02	0.02
4	0.01	0.01	0.01	0.01	0.01	0.01
5	0.008	0.008	0.008	0.008	0.008	0.008

DIN 7168 Part 1			General tolerances in length & angular measures			
			Nominal measures			
precision degree	Form	Alignment	Form	Alignment	Form	Alignment
1	0.5	0.5	0.5	0.5	0.5	0.5
2	0.3	0.3	0.3	0.3	0.3	0.3
3	0.2	0.2	0.2	0.2	0.2	0.2
4	0.15	0.15	0.15	0.15	0.15	0.15
5	0.1	0.1	0.1	0.1	0.1	0.1



DN-2" Class-600  
(Type of material)  
(Heat number)

See drawing no. ANA/JC for H-25  
Letter's height: 25 mm  
Letter's height: 15 mm  
Letter's height: 6 mm

Note 1:  
Useful thread: 14 mm  
Max. depth: 16 mm

(\*) Tolerance:  $\text{Ra } 0.05 \text{ B}$

Non-dimensional radius = 2 mm  
Sharp edges to be removed  
 $\sqrt[3]{\frac{32}{16} \cdot \frac{6.3}{5}}$

(1) When starting from RS version, machine only this area

JC		JC		JC	
Rev.	Modification	Date	Drawn	Checked	Scale
1		10-12	ELI		1:1
2	Modif. Dimensions	10-12	ELI		1:1
3	Revisions	1-10	JLR		1:1
4	REV. ISSUE	1-10	JLR		1:1

Part	Material	Scale	Weight	Page
BODY	DN 7168 Rough	1:1	---	1
FIG.560B DN-2" Class-600	Your order			

Rev.	Modification	Date	Drawn	Checked
1		10-12	ELI	
2	Modif. Dimensions	10-12	ELI	
3	Revisions	1-10	JLR	
4	REV. ISSUE	1-10	JLR	