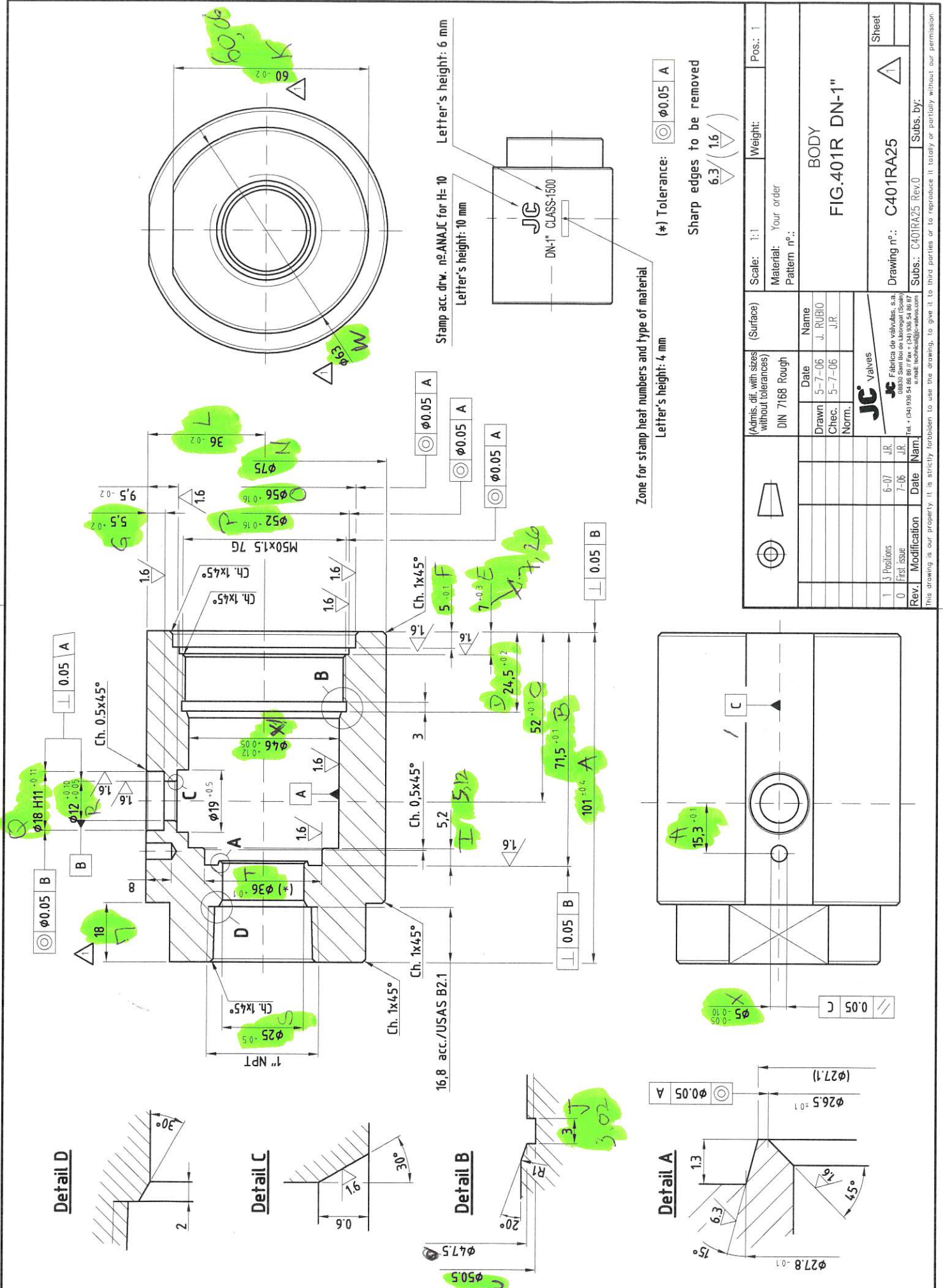


<p>General tolerances of position</p> <p>1 degree Symmetry 0.5</p> <p>1 degree Symmetry 1</p> <p>1 degree Symmetry 1</p>	<p>General tolerances of shape</p> <p>5 degree Alignment 0.5</p> <p>5 degree Alignment 0.5</p> <p>5 degree Alignment 0.5</p>	<p>General tolerances in length &amp; angular measures</p> <p>g (rough) 0.15</p> <p>precision degree 0.5</p> <p>precision degree 0.5</p>	<p>General tolerances in length &amp; angular measures</p> <p>g (rough) 0.15</p> <p>precision degree 0.5</p> <p>precision degree 0.5</p>
--	--	--	--



40,8 to 2,2