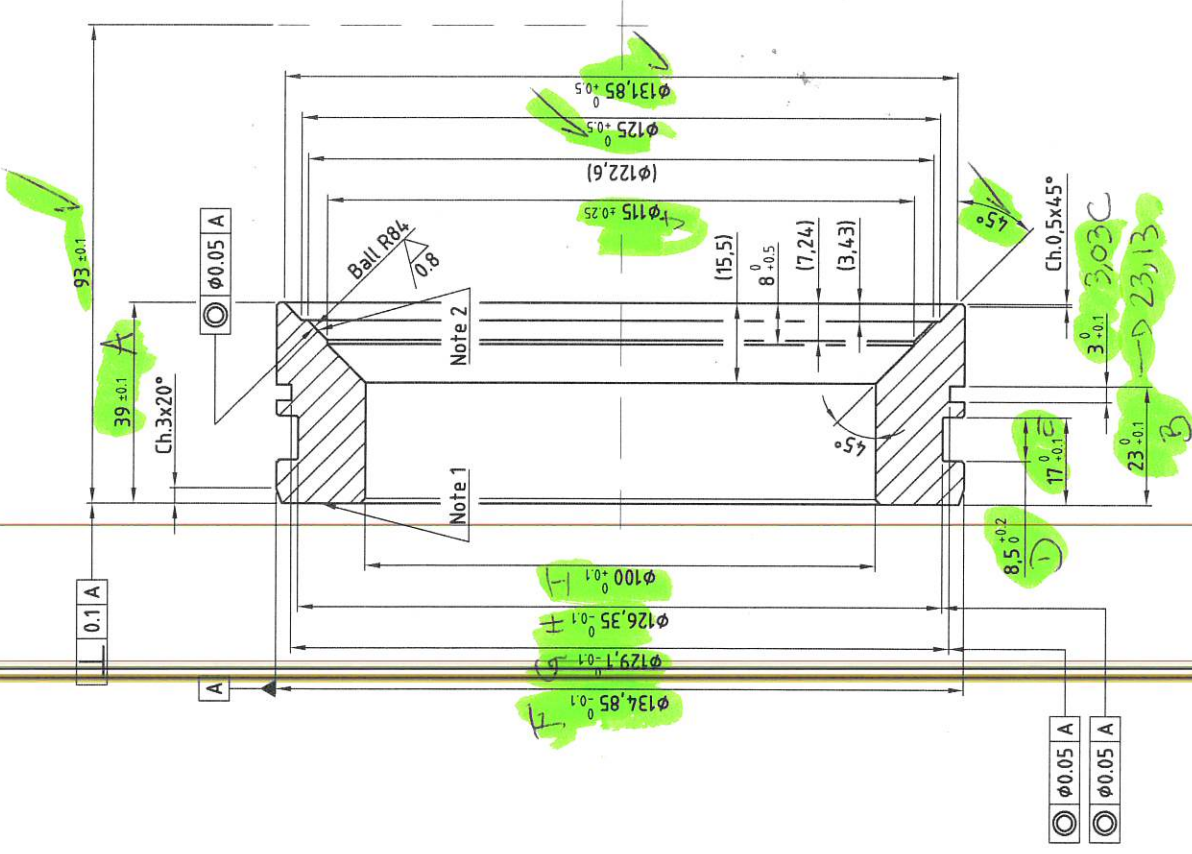


DIN 7168 Part 1: General tolerances in length & angular measures	
Normal measures	
precision degree	unit
±0.1	3
±0.2	6
±0.3	9
±0.4	12
±0.5	15
±0.6	18
±0.8	24
±1.0	30
±1.2	36
±1.5	45
±2.0	60
±2.5	75
±3.0	90
±4.0	120
±5.0	150
±6.0	180
±8.0	240
±10.0	300

DIN 7168 Part 2: General tolerances of shape	
Normal measures	
precision degree	unit
±0.05	3
±0.1	6
±0.15	9
±0.2	12
±0.3	18
±0.4	24
±0.5	30
±0.6	36
±0.8	48
±1.0	60
±1.2	72
±1.5	90
±2.0	120
±2.5	150
±3.0	180
±4.0	240
±5.0	300
±6.0	360
±8.0	480
±10.0	600

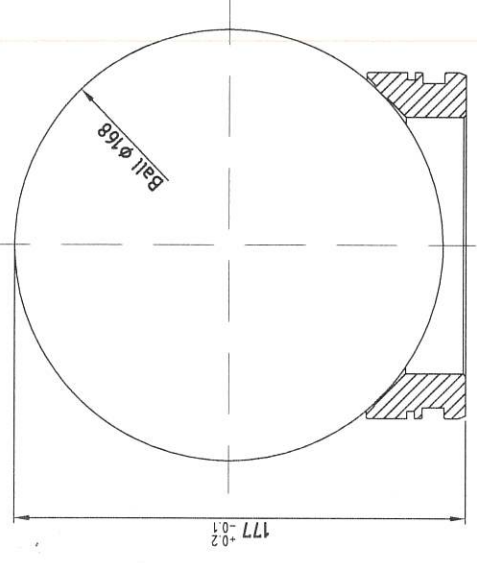
DIN 7168 Part 2	
precision degree	unit
±0.05	3
±0.1	6
±0.15	9
±0.2	12
±0.3	18
±0.4	24
±0.5	30
±0.6	36
±0.8	48
±1.0	60
±1.2	72
±1.5	90
±2.0	120
±2.5	150
±3.0	180
±4.0	240
±5.0	300
±6.0	360
±8.0	480
±10.0	600



Note 1: Stamp 1 for material 14401  
 Stamp 3 for material 14563  
 Stamp 4 for material 14404  
 Stamp 5 for material INCONEL-625  
 Stamp 9 for material 14539

Note 2: Shape checking:  
 This surface must be in direct contact with φ168 mm ball.  
 For compare that make up the ball shoffly with colour  
 and slides without pressure ball and seat face to face.

Checking  
 Esc.: 1:2



Sharps edges to be removed  
 1.6 / (0.8)

Scale: 1:1	Weight:	Pos.: 5
Pattern n°:		
METAL TO METAL SEAT		
DN-4" Class-1500		
Drawing n°: 6050TB100AM		
Sheet		
Subs. by:		
Subs. n°:		
Date: 10-09		
J.C. Valves		
Echibice de valvulas, s.a.s. 04000 Suroeste de Llanera (ISS) - 041300 Suroeste de Llanera (ISS) - Tel. + (34) 956 54 86 86 / Fax + (34) 956 54 86 87 e-mail: tecnico@jc-valves.com		
Rev. 0	First issue	J.U.
Rev. 1	Modification	Date
This drawing is our property. It is strictly forbidden to use the drawing, to give it to third parties or to reproduce it totally or partially without our permission.		